

Invest Christchurch

Issue 01. October 2012



Christchurch Central
Development Unit

From the director

Welcome to the first edition of *Invest Christchurch* – the monthly CCDU newsletter.

The idea behind *Invest Christchurch* is to keep you, as someone who will be instrumental in bringing private investment into Christchurch, completely up to date with the reconstruction programme. CCDU, a unit within the Canterbury Earthquake Recovery Authority (CERA), and many others are working hard to get the rebuild moving – and this is the place to find out about it.

The title *Invest Christchurch*, also used for our new investment facilitation service, reflects its strong focus on investment and on information that assists investment decisions. Our newsletter will run alongside the monthly CERA supplement, which concentrates on the recovery in greater Christchurch and community-centred issues.

As you'll see, CCDU's activity is starting to ramp up. Through until the end of the year, we'll be working hard to bring to market the four priority anchor projects –

Te Papa Ōtākaro/Avon River Precinct, the North and East Frames, the Convention Centre and the Metro Sports Facility – and to prepare design briefs, develop procurement options and complete business cases.

I look forward to working with you in the months ahead to deliver a vibrant, prosperous central city that can drive the growth that greater Christchurch and the Canterbury region need.

Warwick Isaacs
Director



CCDU reaches out to UK



CCDU Director **Warwick Isaacs** and Investment Manager James Hay visited the UK this month to brief insurers on the rebuild and swap notes with global experts on urban regeneration.

Their presentation to the New Zealand Earthquake Recovery Symposium was attended by around 150 executives from Lloyd's insurance market. Warwick and James gave an overview of the Christchurch Central Recovery Plan, the rapidly declining aftershocks and the strong momentum of the Canterbury economy.

"This was a fantastic opportunity to address uncertainty about Christchurch and New Zealand with people who will influence commercial insurance and pricing conditions," said Warwick.

He noted it was also a valuable chance to bring people up to speed with the rebuild and give them "a comprehensive NZ Inc perspective".

Other meetings involved the organisations that built London's Olympic Park and its facilities, which

have belonged to the people of London since this year's Olympic Games.

"In terms of the scope of the project and the timeframes involved, their experience resonates very closely with what we're aiming to do," said Warwick. "Despite the difference in scale, the goal is the same: creating an urban space that attracts people and drives economic growth."

Of particular interest is the project's legacy component, which transformed one of the most economically challenged areas of the UK into a world-class, thriving district.

Warwick said that he and his team took a great deal of heart from the visit: "Faced with similar building challenges to us, and with tight timeframes, they've achieved success on a monumental scale – and that's something we plan to emulate." ☺

1 Stratford Centre, London

Timeline – 2012

September



- Expression of Interest (EOI) design, project management and quantity surveying for Ōtākaro/Avon River and Frame



- Request for Proposal (RFP) for consultancy to target philanthropic sector

October



- Presentation to earthquake symposium in UK
- EOI for Convention Centre
- Design and build competition for New Urban Village

November



- EOI for government office accommodation
- RFP for design, project management and quantity surveying for Ōtākaro/Avon River and Frame

Notices

What: EOI for Convention Centre Precinct
Where: Government Electronic Tenders Service
www.gets.govt.nz
When: 10 October



What: Government accommodation EOI
Where: Government Electronic Tenders Service
www.gets.govt.nz
When: November
Details: See CCDU website for an overview brief
www.ccdugovt.nz/newsletter



Attention central city property owners!

If you own a property in an area designated for an anchor project, you should have received a letter from CCDU advising you what's happening. Visit our website www.ccdugovt.nz to check whether your property has been designated. If you have any questions or haven't yet been contacted by the Crown's agent (The Property Group), please contact CERA on 0800 RING CERA or at info@cera.govt.nz.



What the central city rebuild means to me

Don Miskell, CCDU Senior Manager, Design and Planning

For me, the reconstruction of central Christchurch is a fantastic opportunity – not just to rebuild a wonderful city, but to make it better than it ever was.

I've had a passion for Christchurch, and for the central city in particular, ever since I first came here in the mid 1970s to study landscape architecture.

For over 30 years, the central city has been where I've lived, worked and played. I've enjoyed meeting friends and colleagues at the gym, cafes, bars and shops in the CBD, and still jog around Hagley Park most mornings. So many of my fondest memories were formed here – it's a part of who I am.

But my passion for Christchurch is not the only reason I'm optimistic about the city's future.

We've got an economy that's performing remarkably well, despite severe hardships. We've got a Government supporting the recovery. We've got a province full of resilient Cantabs who just get on with the job. People and businesses are working together to overcome difficulties and find innovative responses to challenges.

For all these reasons, I believe we have the resolve and resourcefulness to achieve anything.

I'm proud to have helped to plan and design the rebuild, as part of the Blueprint Consortium and now the CCDU. Working with such a team of champions, guided by a vision, values and purpose that I believe in strongly, is a personal and professional highlight.



Christchurch will top the list as a place to visit, live, play, study, work and invest.



Every person will have a chance to participate and lead a full, meaningful and enjoyable life – and that's something every city should aspire to. ©

1 Don Miskell, CCDU Senior Manager, Design and Planning

Lonely Planet backs Christchurch

Travel bible Lonely Planet has given a big plug to Christchurch in its recently released New Zealand Travel Guide, describing it as a “vibrant city in transition, coping resiliently and creatively after the quakes”.

According to the guidebook, post-earthquake Christchurch is developing faster than anywhere else in New Zealand. It singles out Addington as the city's “funkiest and most exciting post-earthquake neighbourhood”.

Lonely Planet's endorsement follows a decision by the Australian Government to drop a Christchurch travel warning in August.

For the full article, see: <http://www.stuff.co.nz/the-press/christchurch-life/7719637/Addington-makes-the-travel-A-list> ©



Invest Christchurch service: Manager's update

Launched two months ago, Invest Christchurch facilitates private investment by helping investors access information, identify opportunities and overcome regulatory hurdles.

The Invest Christchurch team has hit the ground running. So far we've engaged with over 300 potential investors, including funders, developers, property owners, occupiers, service providers and property buyers.

Most (around 60%) have been local. There has also been significant interest nationally (around 30%) and from abroad (around 10%), mainly from Australia and China.

Clearly our message about the unique opportunity in Christchurch is getting through.

As the rebuild gathers momentum, we'll engage directly with the market to help provide certainty and confidence, to

encourage proactive investment, and to find practical and innovative solutions to the challenges investors face.

If you have any investment-related queries, please contact Invest Christchurch on (03) 352 0636 or at investchristchurch@ccdu.govt.nz



1 Sheila McBreen-Kerr, Invest Christchurch Manager

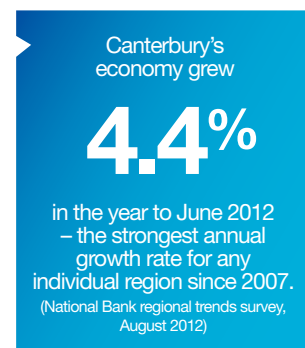
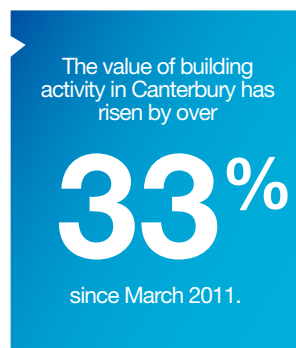
Real estate agents

The following Christchurch-based real estate agents have been in contact with the Invest Christchurch team.

Bayleys	(03) 375 4700
CBRE	(03) 374 9889
Colliers	(03) 365 7887
Cook Commercial	(03) 343 0600
Cowdy Company	(03) 355 6555
Harcourts	(03) 377 0400
James Lang Lasalle	(03) 341 8210
Knight Frank	(03) 377 1460
Match Realty	(03) 377 8744
McIntosh Realty	(03) 337 0068
Ray White	(03) 379 4120

To add any other real estate agencies to the list, email investchristchurch@ccdu.govt.nz

Did you know ...



Details for Government office requirements released

Further details on the Government's requirements for office space in the CBD are now available.

The Government's Property Management Centre of Expertise (PMCoE), which will source office space for approximately 2,500 public sector employees in the rebuilt central city, has outlined the likely government demand for CBD tenancies.

The brief includes an accommodation specification, and information on the Government's investment objectives and business requirements.

Paul McKeefry, senior analyst at PMCoE, said that the high-level brief would help prepare investors for the release of an EOI next month and an RFP in the new year.

To see the brief, visit the CCDU website www.ccdu.govt.nz/newsletter. For other queries, contact the Invest Christchurch team on (03) 352 0636 or investchristchurch@ccdu.govt.nz



Design competition announced for New Urban Village

The Christchurch City Council, the Ministry of Business, Innovation and Employment, CERA and Te Rūnanga o Ngāi Tahu have announced a design competition for the New Urban Village. This initiative brings to life the residential demonstration project included in the Christchurch Central Recovery Plan, and is supported by CCDU and Ngāi Tahu.

Designers and developers from around the world are being invited to enter the design and build competition. The winners will provide

medium-density housing with easy access to green space, retail and entertainment areas, and transport and recreation facilities.

Located on the edge of the East Frame, the New Urban Village will re-launch Christchurch's central city as one of the most desirable places to live in New Zealand. It will inspire people to settle and invest in the new city.

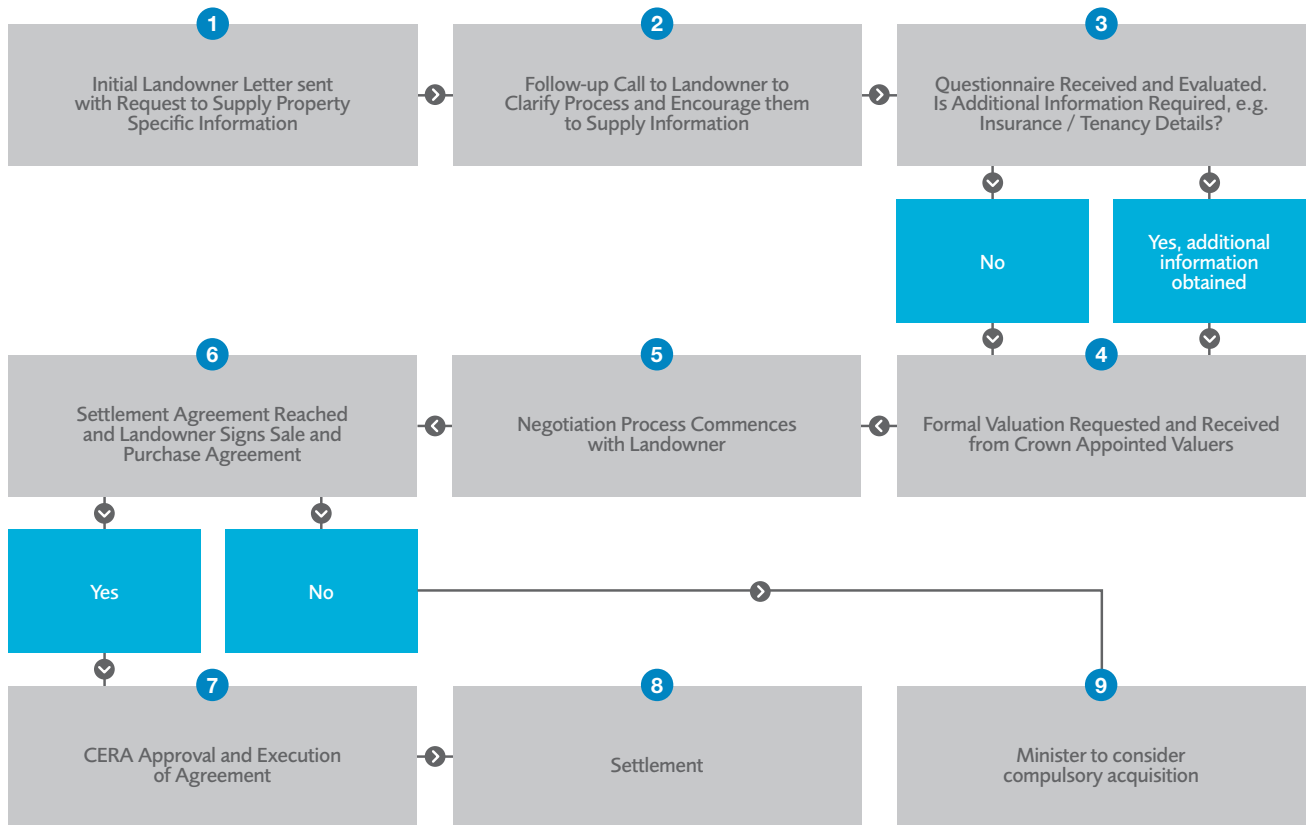
Full details of the competition have been announced on Monday 15 October.

The best three concept designs will be selected

to complete detailed designs, from which a winner will be chosen. ©

What: Launch of New Urban Village design competition
 Where: New Urban Village website www.newurbanvillage.org.nz
 When: From 15 Oct

Property acquisition by agreement process



Key contacts

CERA	0800 RING CERA (0800 7464 2372)	www.cera.govt.nz
EQC	0800 DAMAGE (0800 326 243)	www.eqc.govt.nz
Christchurch City Council	03 941 8900	www.ccc.govt.nz
Waimakariri District Council	03 311 8900	www.waimakariri.govt.nz
Selwyn District Council	03 347 2800	www.selwyn.govt.nz
Building and Housing Group, Ministry of Business, Innovation & Employment	0800 242 243	www.dhb.govt.nz
Invest Christchurch service	03 352 0636	investchristchurch@ccdu.govt.nz
Rebuild Central	03 941 8999	rebuildcentral@ccc.govt.nz
Canterbury Development Corporation (CDC)	03 379 5575	cdc@cdc.org.nz
Recover Canterbury	0800 50 50 96	info@recovercanterbury.co.nz

Newsletter: To de-register from our newsletter distribution list, contact the Invest Christchurch team - investchristchurch@ccdu.govt.nz