



be seen | be heard | be understood

The Future of Victoria Square

A Place for the People Kia Atawhai Ki Te Tangata Survey
Final Report

18 May 2015

-  Communication
-  Community & Stakeholder Engagement
-  Training



Table of Contents

1.0	Introduction	3
1.1	Location of Victoria Square	4
2.0	Purpose	5
3.0	Survey	5
3.1	Survey Questions.....	5
4.0	Survey Findings	7
4.1	Tell Us Your Story	7
4.1.1	Tell Us Your Story - Themes	7
4.1.2	Tell Us Your Story - Respondents' Comments.....	8
4.1.3	Tell Us Your Story - Findings	10
4.2	What's Important To You - Preferred Uses.	10
4.2.1	What's Important To You - Preferred Uses Part 1	12
4.2.2	What's Important To You - Preferred Uses Part 1 Results	12
4.2.3	What's Important To You - Preferred Uses Part 2 Themes.....	14
4.2.4	What's Important To You - Preferred Uses Part 2 Respondents' Comments	15
4.2.5	What's Important To You - Preferred Uses Findings.....	16
4.3	Existing Features.....	16
4.3.1	Existing Features - Themes	17
4.3.2	Existing Features - Respondents' Comments.....	18
4.3.3	Existing Features - Findings.....	19
4.4	New Features	19
4.4.1	New Features - Themes	19
4.4.2	New Features - Respondents' Comments.....	20
4.4.3	New Features - Findings.....	21
4.5	Any Other Comments	21
4.5.1	Any Other Comments - Themes.....	21
4.5.2	Any Other Comments - Respondents' Comments	21
4.5.3	Any Other Comments - Findings	22
5.0	Findings.....	23
6.0	Appendix.....	25
6.1	Appendix A - Comments.....	25
6.2	Appendix B - Survey.....	26



1.0 Introduction

In collaboration with its strategic project partners, Christchurch City Council and Te Rūnanga o Ngāi Tahu, CERA is undertaking a five-stage community participation programme to enable the public to have their say on the future of Victoria Square.

Stage 1 of the community participation programme involved inviting the community to provide input regarding the future of Victoria Square via the survey at *Appendix B* (referred to throughout this report as “the survey”). The following activities were undertaken to encourage community members to take part in the survey:

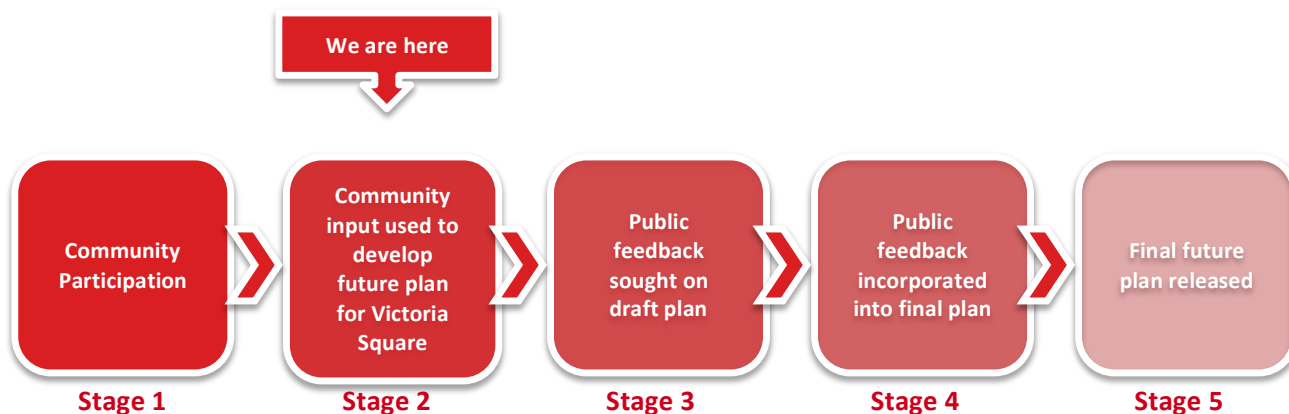
- Advertising in local media
- Press releases
- A public launch event on site attended by strategic partners and key stakeholders
- Individual briefings with interest groups
- Visionarium attendance at Te Matatini
- Information stand in Showcase
- Presentations at key stakeholder gatherings
- Articles in the Future Christchurch Update
- Social media

This report outlines the results of the survey and will guide the development of a draft future plan for Victoria Square. The community will be asked to provide feedback on this draft plan during Stage 3 of the participation programme before a final plan is developed and released during Stages 4 and 5.

No changes will be made to Victoria Square until this community participation process is undertaken. The extent to which changes are made will depend on the feedback received from the community throughout the participation process.

The Associate Minister for Canterbury Earthquake Recovery will seek the endorsement of Christchurch City Council and Ngāi Tahu before making the final decision on Victoria Square.

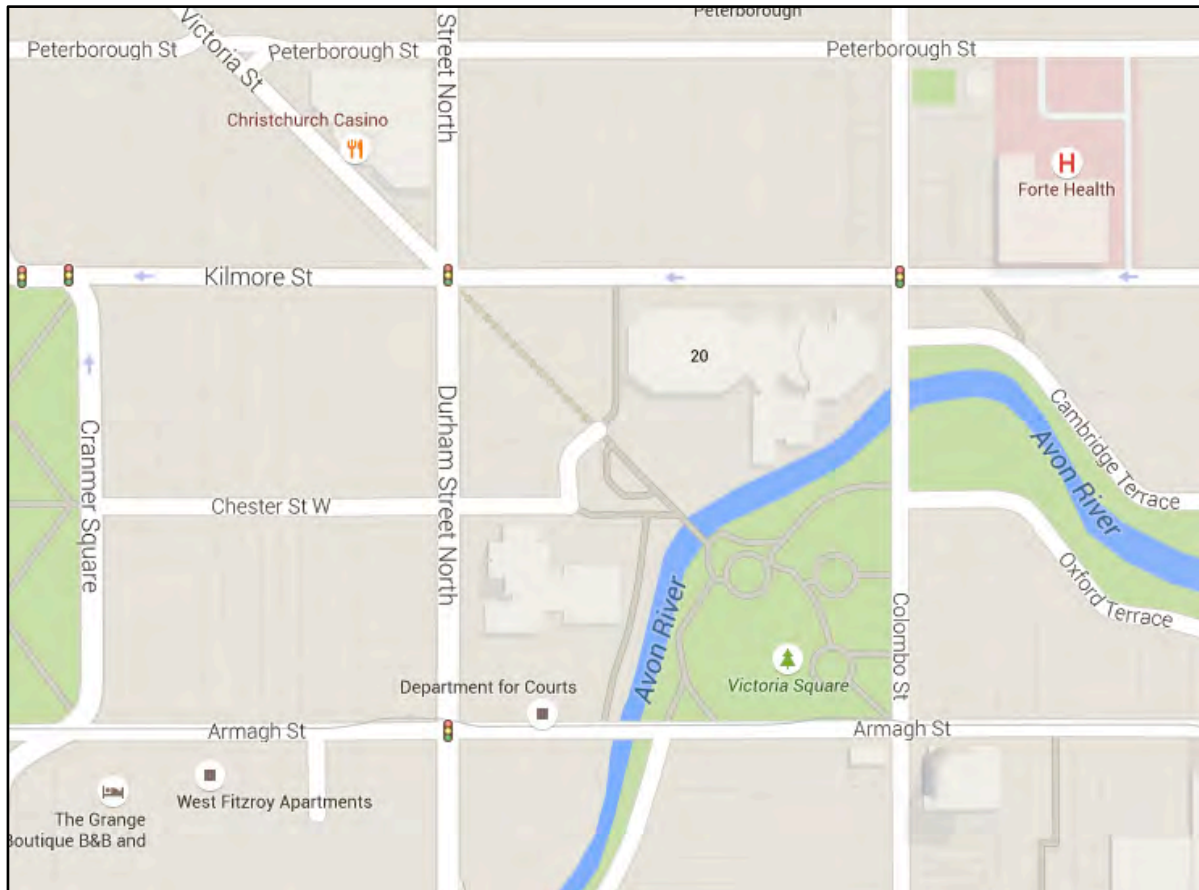
Community Participation Process





1.1 Location of Victoria Square

Victoria Square is situated on the corner of Colombo and Armagh Streets along the Avon River in Christchurch. Victoria Square is adjacent to the Town Hall and will eventually connect with the new Convention Centre and Performing Arts Precinct.



Source: 2015 Google, MapData Sciences Pty Ltd, PSMA



2.0 Purpose

This report builds on *The Future of Victoria Square A Place for the People Ki Atawhai Ki Te Tangata Survey Preliminary Report* that was produced on 5 May 2015. The preliminary report provided an early summary of the initial findings of the survey.

The purpose of this final report is to:

- Provide a thorough analysis of the survey results
- Identify themes in the feedback

3.0 Survey

The survey period was open between 6 March and 24 April and was advertised in the local media, via the CERA, Christchurch City Council and Ngāi Tahu websites and publications such as the *Future Christchurch Update*. During this period, CERA held an information centre (in the Visionarium) at the Te Matatini Festival on 7 and 8 March. The Visionarium was also opened in Victoria Square for 10 days during which time a public event was held on 27 and 28 April. Additionally, CERA held a number of information sessions with key stakeholders.

Respondents were given the options of using a hard copy survey form, providing video submissions or submitting their surveys electronically by using the Bang the Table web platform or email. Throughout the seven-week survey period, 2192 responses were received as follows:

- 614 hard copy submissions
- 1 video submission
- 1577 online submissions

It should be noted that 11 hard copy surveys were accepted shortly after the close of the survey to ensure that all community feedback was considered as part of this engagement process.

3.1 Survey Questions

Respondents were asked the following quantitative and qualitative questions:

- **Tell us your story** – What does Victoria Square mean to you and your whanāu?
- **What's important to you?** Please rate your preferred uses for Victoria Square. Rate as many or as few as you like.
1 – Must have; 2 – very important; 3 – somewhat important; 4 – not important

Respondents were offered the following uses from which to rate their preference:

- Civic events
- Relaxation
- Community events and festivals
- Meeting friends and whanāu



- Markets
 - Fitness and recreation
 - Performances
 - Eating
 - Temporary art displays
 - Pedestrian access to and from the city
 - Acknowledging the past
 - Enjoying the environment
 - Other
- **Please tell us why you have chosen the above uses and why they are important to you.**
 - **Existing features and uses** – We are committed to keeping the Queen Victoria statue, Captain Cook statue, Pou Whakairo, Bowker Fountain, the horse ramp, the Floral Clock and the remembrance plaques. Are there any features of Victoria Square you would like retained?
 - **New features** – Are there any new features or uses you would like included in Victoria Square?
 - **Other comments** – Do you have any other comments to make about the future of Victoria Square



4.0 Survey Findings

In understanding the survey findings, it must be noted that of the 1577 online submissions, 40 respondents submitted their survey multiple times by hitting the submit button a number of times. This resulted in 99 responses from the 40 respondents (for eg, the submission from one respondent may have been entered from 2 – 4 times.) They have been included in the statistics.

The findings for each of the survey questions are outlined below, including:

- Themes
- Respondents comments
- Overall findings for each question

4.1 Tell Us Your Story

Respondents were asked: What does Victoria Square mean to you and your whanāu?

4.1.1 Tell Us Your Story - Themes

The following general themes were raised in response to the question ‘What does Victoria Square mean to you and your whanāu?’ These themes appear below in order from themes most commonly mentioned to themes least commonly mentioned.

- People enjoy the **sense of space** within Victoria Square
- There is a general theme of **do not change** Victoria Square - people enjoy what it already offers
- Respondents appreciate the existing **trees, shade, greenery, garden beds and vegetation** within Victoria Square and would like them retained
- People like viewing and having access to the **Avon River**. The river is a positive feature of Victoria Square
- Victoria Square is a place for **people to meet and have lunch**
- There is a desire for **existing features to be retained and restored** (e.g. Bowker **fountain**)
- Victoria Square survived the **earthquake** and is a key reason why the space is important to the people
- Victoria Square is a tranquil and peaceful place, a place where you can be **alone**
- It is a place where people can **rest** and **walk** around.
- Victoria Square is a place that triggers vivid childhood **memories**, particularly relating to special times shared with family and friends including:
 - Eating ice-cream
 - Watching the fountain / lights reflecting in the fountain at night time
 - Enjoying the beautiful trees and gardens
 - Gatherings with family and friends
 - City workers enjoying their lunchbreaks
 - A relaxed and friendly meeting place
 - A place to walk around and enjoy the greenspace



- Enjoying the river / water
- Enjoying the festivals and events
- Walking on the grass and feeding the ducks, as per quote below.

4.1.2 Tell Us Your Story - Respondents' Comments

This is what respondents have said:

Green – “I love the ambience of Victoria Square, which the green of the grass, the curved shapes of the pathways and borders and the trees give”

“Green space to gather and enjoy events / relaxing”.

“Green trees, cool green grass, shade”.

“Eating lunch, people kicking off their shoes to feel the grass beneath their feet”.

River – “Connect to the river, reinstate or celebrate northbank”.

Fountain – “Statues, bridge and fountain give character and remind of past”.

Lunch – “It was a great place to go at lunch time to meet friends and eat lunch. Also as a meeting place before going to the theatre or events at the Town Hall”.

“A place to relax, enjoy the sunshine while eating lunch or picnic in the best oasis in the central city”.

Earthquake-proof – “A well designed place that survived the earthquakes and should stay as it is”.

Family – “It is a space for reflection, relaxation and family where stories of the past, present and future intersect”.

Peaceful – “A lovely fresh peaceful place in town, away from the noisy event”

“A very relaxing peaceful place right in the middle of the busy traffic/life prior earthquake...”

Garden – “A wonderful restful area with undulating lawns, fabulous garden beds and a lovely area for grandchildren to play in”.

Remember – “I remember it as a child looking down on the Bowker fountain after dark playing with its lovely colours from our hotel”.

“Before the earthquakes the carols by candlelight used to be there and that was a great venue”.

Friends – “I loved talking to friends in the enclave by the floral clock”.

Relaxing – “It is a nice relaxing area in the central area of the city where cultural events can be held along with other activities”.

Heritage – “A beautiful landscape, beautiful trees, perfect harmony with the river, ice cream Charlie, Town Hall fountain, historic bridge, symbol of the Englishness of Christchurch, our European heritage, gardens in the 'garden' city”.



Picnic – “My whanāu have used Victoria Square as a place to picnic, read, gather, and have family photos”.

Some of the memories include:

- “It’s one of the few places unchanged in my lifetime”.
- “Needs to be a green space where people can relax and eat their lunch and very little else. Beautiful and serene and lots of good memories there”.
- “Victoria Square has so many happy memories for me. I love the plants. I love the floral and lantern festivals and the buskers that were all there pre earthquake. It is a beautiful restful place in the city with the river and ducks”.
- “I have a special early memory of Victoria Square. I went with my family and my parents to dinner at the newly opened Park Royal. Afterwards in the dusk, we walked around Victoria Park, as if a spell was upon us. So beautiful. It spoke for itself. Further adornment was not necessary”.
- “My children and I have lovely memories of walking on the grass, feeding the ducks. It is a quiet space and I believe retaining the grassed areas and trees are vital for retaining some constant untouched space, when so much is changing”.
- “A valuable part of our memory of the way relatively informal green space in the centre of Christchurch was used by people working in the CBD and visitors...”
- “We have enjoyed meeting friends and family” in Victoria Square.
- “Weekend excursions to Victoria Square to visit ice-cream Charlie were part of my childhood as well as my father's. I would also take our children there, when they were small, after visiting Canterbury Public Library to run around and feed the ducks. We used to go to Festivals there and we used to regularly walk through the Square when we were working in town”.
- Victoria Square “... is historical. My great grandfather used to race down Bealey Ave to Market Square as it was called then on a good horse (Skylark), but it upset my great grandmother. I like the 'bricks'/landing and the history of it being where early Pakeha boats came up the river. Perhaps there could be a subtle plaque to explain this. Acknowledge the past Waitaha also Ngāi Tahu who arrived very much later also Pakeha early settlers. I like the statues where they are”.
- “It is a happy memory of a quiet place we could have a break while visiting the CBD.....as a mother with toddlers who couldn't afford to visit cafes and restaurants, we need more family- friendly open spaces which don't cost money to visit”.
- “It holds a fond memory of Candle light services for our families and others. It is a place my grandfather used to take his horse to cool off. My mother and I enjoyed the floral festivals. I



appreciate it is a significant place for Māori and was their market place and that is a part of Christchurch”.

- “Why not put a memorial wall/ plaque there as part of this new history we are creating commemorating the loved ones lost in the earthquake”.
- “I would very much like to have something of central Christchurch remain as it was prior to the earthquakes. Retaining Victoria Square pretty much as it was would be great - I can show my grandkids something that is the same as it was before. We have lots of new in the city, which is good, and we need some 'old' to give us balance and a feeling of continuity”.

4.1.3 Tell Us Your Story - Findings

The themes, reflections and quotes from respondents tell us that Victoria Square is very well liked and utilised. Many people have fond memories of Victoria Square as detailed in the quotes above. People enjoy the many existing features Victoria Square offers, along with the sense of greenery, space and tranquillity.

Furthermore, Victoria Square is a place where people can enjoy the natural environment, including the river, within the city. Respondents seem to like the existing features, fountains and statues within Victoria Square including the Bowker fountain, as a way of acknowledging some of the past.

Victoria Square is a spot within Christchurch that offers peace and quiet, opportunities for lunchbreaks and gatherings with family and friends. It is a popular spot for lunchbreaks, family picnics, gatherings and even meetings. Finally, it is a place of significant meaning to a broad array of people.

The vivid stories shared tells us there are many generations who have established fond experiences and long-term memories in and around Victoria Square. There is also a sense of wanting to pay tribute to the past and to recognise what has made Christchurch. Victoria Square is a place of mixed emotions, where office workers, children, families and friends can mingle, but also a place where people can pay tribute to history and the earthquake victims.

4.2 What's Important To You - Preferred Uses.

Respondents were asked to respond in two parts:

Part 1 - Please rate your preferred uses for Victoria Square. Rate as many or as few as you like.

Respondents were offered the following uses from which to rate their preference:

- Civic events
- Relaxation
- Community events and festivals
- Meeting friends and whānau
- Markets
- Fitness and recreation



- Performances
- Eating
- Temporary art displays
- Pedestrian access to and from the city
- Acknowledging the past
- Enjoying the environment

Part 2 - Please tell us why you have chosen the above uses and why they are important to you.



4.2.1 What's Important To You - Preferred Uses Part 1

The survey provided respondents with four options to select their level of support for 12 uses for Victoria Square. The four options are as follows:

1. **Must have**
2. **Very important**
3. **Somewhat important**
4. **Not important**

It should be noted that it was not mandatory for each respondent to score each use.

4.2.2 What's Important To You - Preferred Uses Part 1 Results

As can be seen in **Table 1** below, which outlines the number of responses for each use, respondents' preferred uses, or "must haves", were:

- Relaxation (1518)
- Enjoying the environment (1519)
- Pedestrian access to and from the city (1098)
- Meeting friends and whanāu (1083)
- Acknowledging the past (785)

There was moderate support for Victoria Square to be used for

- Community events and festivals (438 must have, 447 very important)
- Temporary art displays (209 must have, 397 very important.)
- Performances (261 must have, 379 very important)

The below uses were considered not important by respondents, with the highest number of ratings for not important and low ratings for must have:

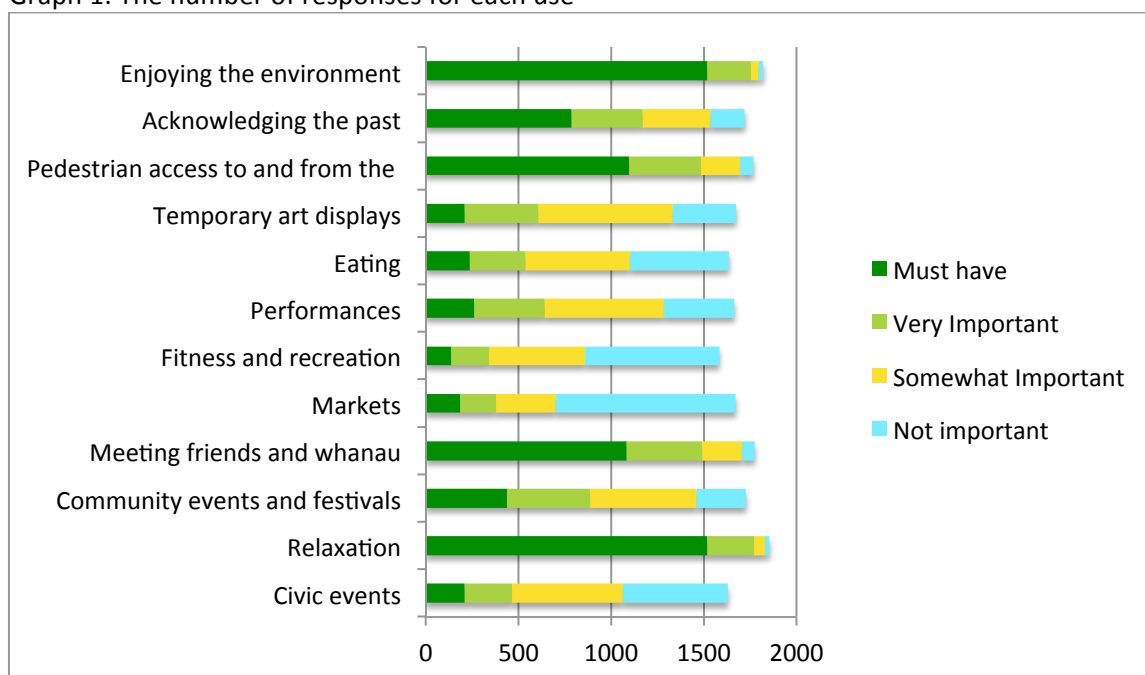
- Civic Events (566 not important, 210 must have)
- Markets (970 not important, 186 must have)
- Fitness and recreation (722 not important, 137 must have)
- Eating (533 not important, 237 must have)



Table 1: The number of responses for each use

Activity	Must have	Very Important	Somewhat Important	Not important
Civic events	210	256	597	566
Relaxation	1518	251	61	23
Community events and festivals	438	447	576	265
Meeting friends and whanāu	1083	408	214	68
Markets	186	191	324	970
Fitness and recreation	137	204	519	722
Performances	261	379	642	381
Eating	237	299	565	533
Temporary art displays	209	397	727	339
Pedestrian access to and from the city	1098	386	210	72
Acknowledging the past	785	385	367	183
Enjoying the environment	1519	235	39	27

Graph 1: The number of responses for each use





4.2.3 What's Important To You - Preferred Uses Part 2 Themes

The following general themes were raised in response to the question 'Please tell us why you have chosen the above uses and why they are important to you?'

The themes have been grouped into '*natural environment*', '*quiet and relaxation*', '*heritage and reflection*', '*markets*' and '*change*'.

- **Natural environment**
 - A beautiful place to meet with friends and family
 - Lovely green space, grass, established trees, flower beds – to be enjoyed and retained
 - Tranquil natural environment within the busy city
 - Seating and benches to remain for people to reflect, have lunch and enjoy the surrounding environment.
- **Quiet and relaxation**
 - A peaceful and relaxing place to spend some time, a lunch time meeting place, which also offers shelter / seating and a place to eat
 - It needs to remain a peaceful, quiet and tranquil spot within the city of Christchurch
 - Victoria Square provides an opportunity for reflectionA lovely spot for office workers, tourists and city dwellers.
- **Heritage and reflection**
 - Victoria Square is a place to acknowledge our past
 - Memories and reflections can be shared
 - The fountains and statues provide a sense of history and culture and should be retained
 - Retain Victoria Square as it was prior to the earthquake
- **Markets**
 - Most respondents were opposed to the idea of having markets within Victoria Square
 - Suggestions of alternative locations for markets other than Victoria Square
 - Utilise existing restaurants rather than markets.
- **Change**
 - There has been enough change already
 - People are not wanting more change
 - Retain / keep what is there
 - Do not change
 - Repair anything broken but keep the existing layout of Victoria Square.



4.2.4 What's Important To You - Preferred Uses Part 2 Respondents' Comments

Respondents provided a range of stories and heartfelt reflections including:

Trees – “Victoria Square is special as an island of grass, trees and gardens, opening to the river”.

“A place of green, trees, peace and serenity”.

Earthquake – “...In its current form it is a link with the city's past, and is largely unaffected by the earthquakes”.

“The city has an excess of rectangular spaces and is very flat. Curves and mounds add a sense of novelty and promise. So I loved the sinuous paths and gentle slopes of Victoria Square up to the earthquakes”.

“It is an area where we recognise where we are, take a deep breath and smile and rest our broken hearts”.

Grass – “This is a park of the people. It was not designed for big events and commerce. It's a private oasis in the heart of the city - plenty (of) seating, grassed areas create quiet and the trees provide texture, beauty and shade. The curves in the landscape and seating are in comforting contrast (sic. contrast) to the harsh right angles of the surrounding buildings”.

Family – “The square represents a peaceful, reflective, therapeutic environment to chill out in. It is a tranquil meeting place for family and friends”.

“This could be a beautiful area to relax and enjoy festivals and a Sunday afternoon. I have spent many years here in the past eating ice cream as a child, mother and grandmother. Remember it as a green space, surrounded by busyness. Place to sit and relax or enjoy events...”

Seating – “It was lovely just the way it was before the quakes! Open, friendly with soft curved grass areas the flowers and seating”.

Bowker Fountain – “Repair the Bowker fountain, and leave the rest alone”.

“I like its green space, its fountain and statues. I like the fact it has pathways leading through to other roads”.

“I like the statues and the fountain and the bridge”.

Curves – “The curves in the landscape and seating are in comforting contrast to the harsh right angles of the surrounding buildings”.

Tranquillity – “A reminder of our past, tranquillity, access and beauty”.

“It is a small pocket of quiet in the inner city”



Māori – “The square needs to incorporate a history of Christchurch starting with Māori history and going forward.”

Memories – “Victoria Square since the earthquakes is one of the few remaining places we can enjoy as a city and have fond memories of for particularly us older folks”.

“This place holds important memories for me. Functions such as a comfortable shady place to enjoy the Buskers - Carols by Candlelight. The only peaceful place within the city for office workers to enjoy a lunch break”.

“So many happy pre-earthquake memories.”

Shelter – “Pedestrian access was along windy paths which made the area more interesting and also gave a feeling of space. I also appreciated that some areas were sheltered from the wind”.

4.2.5 What’s Important To You - Preferred Uses Findings

Respondents generally wanted Victoria Square to retain its green natural environment, with an emphasis on relaxing, enjoying the environment with friends and whanāu, providing pedestrian access to and from the city, as well as acknowledging the past. There was also moderate support for some community events and festivals, especially those held in the past, as well as temporary art and performances. There was limited support for uses that were commercial in nature such as markets or cafes.

The various reflections from respondents demonstrate how highly regarded Victoria Square is to the local community and how it has provided, and should continue to provide, a quiet spot to relax, enjoy and reflect upon the past, present and future.

4.3 Existing Features

Respondents were advised that CERA is committed to keeping the Queen Victoria statue, Captain Cook statue, Pou Whakairo, Bowker Fountain, the horse ramp, the Floral Clock and the remembrance plaques. Respondents were asked what other features of Victoria Square they would like retained.



4.3.1 Existing Features - Themes

Features that respondent's want retained within Victoria Square include:

- **Trees** – including leaving the existing trees unless diseased or dying and maintaining trees
- **Pathways** – including the layout, keeping the curved pathways through Victoria Square
- **Fountain** – including restoring Bowker fountain
- **Art** – including having contemporary art, or Māori art, having art exhibitions within Victoria Square
- **Boat landing River access** and **retaining the bridge** across to the Floral Clock
- **Statues** and the historic connection
- **Green** features and lawns
- **Seating**, with additional seating provided
- **Ice-cream Charlie** – which originates from 1903 and reopened in Victoria Square in November 2014.



4.3.2 Existing Features - Respondents' Comments

Respondents provided a range of quotes and stories emphasising a love of the natural environment provided by Victoria Square, as outlined below.

Trees – “Trees and garden vital”.

“I frequently use Victoria Square for access to and from the city - and have done for years. I love the beautiful trees, the view over the river from the bridge, the lawns, the colour in the gardens and the tranquillity. I love the linkage to our earlier Christchurch when we truly were the garden city, Victoria Square is a wonderful connection to the past”.

Path – “It’s a pretty area now but would like to see it with a walk/cycle path following the river that continues on to the Eastern area of Christchurch. We like Victoria Square with the grass not keen on too much concrete”.

“Please leave the meandering paths”.

Fountain – “Restore original features ONLY i.e. floral clock and fountain”

“Leave the trees as they are. DO NOT change the layout. All the water features including fountains”.

Art – “Emphasis should be on green lawns and gardens to promote our Garden City image and be a suitable site for outdoor music and art exhibitions and promotions”.

“There may be a possibility of temporary art works to add interest and diversity but nothing new that is permanent”.

River access – Retain the “Bridge over the river”.

“I'd like to retain it the way it is now. I like the green space and access to the river”.

Statues – “Only sort out the river edges and repair the fountain and statues which should remain in their place not moved”.

Green – Retain “All the green features, especially the lawns”.

Repair – “Once repairs and maintenance have been completed it will continue to be a valuable space in the central city”.

Seating – “Having seating near to the river for quiet relaxation”

Access – “Access to the water’s edge”

“Foot access through to Kilmore St”.

“The bridge across to the floral clock”

“Joining to bridge and floral clock area”

Ice-cream – “I would like to keep the grassed areas as much as possible ... I think this makes the area more user friendly and relaxing and ice cream Charlie”.



4.3.3 Existing Features - Findings

The above stories, reflections and quotations demonstrate how the community would like certain features to remain within Victoria Square, which already work effectively. Being recognised as a quiet place for people to relax and enjoy their surrounds, Victoria Square demonstrates how the community can develop a strong relationship with the natural environment within a busy city centre.

In addition to the features which CERA has committed to retain, there was support for the retention of the trees, sinuous path style, floral clock, phone box and the ice cream provider.

4.4 New Features

Respondents suggested a range of new features and uses for Victoria Square. The suggested features or uses were centred on:

- a) **Amenities** – most commonly toilets, bins, drinking fountains, lighting (especially for security), additional seating, shaded areas
- b) **River-related** – most commonly better access to the river and a punting stop
- c) **Culture and history** – most commonly the integration of Māori culture and history, as well as a recognition of the Earthquake
- d) **Community activities** – most commonly previously-held events including the lantern festival and buskers festival
- e) **Natural Environment** – trees, grass, green vegetation

A large number of respondents also said they did not want any new features and wanted the square to remain as it currently is.

4.4.1 New Features - Themes

The various themes of new features suggested by respondents are outlined below.

Amenities

- Provide more seating, toilets and drinking water fountains
- Access be provided – including wheelchair and cycle access, as well as pedestrian access to the square
- Additional infrastructure to be provided, including lighting and rubbish bins
- Provision of shade.

River-Related

- Punting ramp
- More opportunities/easier access for boating on the Avon River

Culture and History



- Install more explanatory plaques/signs, including explanations of the local historyCreation of a memorial wall

Community Activities

- Hosting of events such as the Lantern Festival and Buskers Festival
- Provide a stage area for small public events
- Some activities could be provided for children including a small playground or uses such as hop scotch

Natural Environment

- Replace trees along the river, which had previously been removed
- Keep the natural environment well-maintained within Victoria Square
- Replace any dead or diseased trees

No new features

Some respondents did not want any new features at all, and instead mentioned how they wish to keep Victoria Square the same, e.g. "I want it kept AS IS and am not interested in 'new features or less'".

4.4.2 New Features - Respondents' Comments

New features quotes:

- "More seating along the banks of the river - especially for older folks like me who struggle to sit on the ground".
- "At the very most, fix the fountain. You could block off all car and food truck access to make it a more citizen oriented place rather than a commercial zone".
- "Don't put in stairs without ramps....think of those with disability and remember that 2011 created more of them".
- "No leave as is please".
- "Include some decorative lighting at night to highlight shadows from trees and include special lighting effects with the Bowker Fountain as previously".
- "I would like to see indigenous and other cultures permanently reflected in the landscape".
- "Maybe the earthquake displays. Plenty of past icons".
- "The square worked perfectly well before the earthquakes and does not need change".
- "More acknowledgement of tangata whenua presence and acknowledgement of the earlier history".
- "Perhaps introducing some features to provide shade in summer so that more people can safely enjoy the outdoor space for casual lunches, organised events etc. Perhaps, also somehow, some elements to celebrate its history - particularly from when it was a market square etc...".
- "None. Other than ensuring that there is continued connectivity from Victoria Street through to the CBD (picking up a vanilla ice on the way)".
- "Areas to sit and some rubbish containers to be cleared often".
- "An earthquake memorial. Maybe a shelter from the rain/wind".
- "Add safety stuff such as lighting".



- “Remediation of the river bank”.
- “Don't object to a punt/waka/kayak landing place, otherwise please keep the square as it is so we can continue to enjoy its wonderful atmosphere”.
- “A kid's play area? Not too big - some nice squirty water play areas in Vancouver (Canada) and Slough (England)”.
- “A few more benches”.
- “Buskers Festival night events such as before earthquake. Outdoor movies.”
- “Maybe it could have deck chairs that people can hire as in Hyde Park, London, This would be great when businesses return to the city and people want somewhere to congregate at lunchtime.”
- “The story of our city displayed as you go through Victoria Square, a nod to our British past, a nod to our Māori past. Maybe more memorial display.”

4.4.3 New Features - Findings

The new uses suggested were low-intensity in nature, focussed on improving the amenity of the square, access to the river, recognising and incorporating history and incorporating previously-used community activities.

4.5 Any Other Comments

The predominant response to this question was leave Victoria Square alone.

4.5.1 Any Other Comments - Themes

Themes include:

- Do not need food carts, markets or commercial distractions in Victoria Square
- Leave Victoria Square alone – leave it as it is
- Retain the history

Suggestions for inclusion include:

- Flower beds
- Recognition of past and present history
- Maintaining recognisable spaces within Victoria Square

4.5.2 Any Other Comments - Respondents' Comments

Respondents provided an array of reflections including:

- “I always loved the river walk from Victoria Square to Cashel St. Part of the charm was subtlety. The curved landscaping of the square drifted back to the curves of the river. Then you could snake along through the city under the trees. It felt like discovery. I do hope this won't be reduced to a walking highway. The curves are important. Children get it. They run



along the curved edges laughing. Curves are playful, relaxed, natural. Straight lines are efficient, serious, man-made. Keep the curves”

- “Fix the Bowker Fountain and remove diseased trees. No need to spend millions on something that doesn't need changing. The money can be spent in more deserving areas”
- “I really don't think it needs changing much”
- “Not a marketplace - that is totally in contrast to the real value of Victoria Square and remove it's real value as a peaceful semi-retreat”.
- “Please leave it unchanged and do not remove undamaged trees. Also, it does not need a wide river frontage - a path through the square is all that is necessary to make ones way along the river. Extra lighting may be a good thing but it should be kept soft- not harsh lighting”.
- “Just leave it alone”
- “Fix the riverbank but leave the rest of the Square alone. Use the money somewhere more needy. "It ain't broke so doesn't require fixing”.
- “Please leave unchanged. We do not require another market place”.

4.5.3 Any Other Comments - Findings

The above mentioned quotes and feedback were centred on leaving Victoria Square alone. It was suggested that only minor repairs to the built and natural environments are needed.



5.0 Findings

The feedback received has demonstrated the views of the Christchurch people. Although there is a strong element of retaining Victoria Square as it was in the past including historical features, fountains, statues and the natural landscape, there are also suggested changes which could be incorporated whilst maintaining the green and relaxing environment.

Additional features included incorporating Māori culture, recognising the recent Earthquake history and improving the amenities (e.g. Improvements to lighting, seating, bins, shade shelters, new features and activities for the children, improved river access).

Based on the quantitative and qualitative feedback received from the community during the Stage 1 survey, the following elements highlighted below should be considered during the design process:

Urban design elements

- Victoria Square continues to be a place that provides opportunities and tranquil grassy spots for relaxation and meeting friends and whanāu
- A maximum amount of green space is retained within Victoria Square rather than extensive hard concrete areas
- Pedestrian access is retained to ensure connectivity within Victoria Square and the broader City of Christchurch
- Adequate lighting be provided to ensure safety
- Curved paths, edges, hills and sinuous lines be retained and enhanced. Limit the use of hard edges
- Ensure meeting spots are retained and enhanced and contain adequate infrastructure including seating, bins and water fountains.

Environmental elements

- All dead and diseased trees are removed and replaced
- Grass, trees and flowering garden beds are maintained
- Improved access to the Avon River and the riverbanks is provided.

Social elements

- Lighting and extensive surveillance is improved to enhance safety.

Preferred Uses

- Retain Victoria Square's use as a place for relaxation, enjoying the environment, providing pedestrian access to and from the city, meeting friends and whanāu and acknowledging the past
- There is moderate support for community events and festivals (notably the Lantern and Buskers Festivals), temporary art displays and some performances
- There is very limited support for commercially-based permanent uses, such as cafes, markets or food vans. It suggested these could be provided in adjacent areas.



Structural/physical

- Prominent existing features within Victoria Square be retained, such as the Queen Victoria statue, Captain Cook statue, Pou Whakairo, Bowker Fountain, the horse ramp, the floral clock and the remembrance plaques.
- Damaged structures be repaired.

Historical/cultural

- The entire historical and cultural aspects of the past be recognised.
- Recognise Māori culture and history.
- Plaques and information be provided.

New elements

- Any new additions to Victoria Square should support the current green and relaxing environment.



Appendix A

6.0 Appendix

6.1 Appendix A - Comments

Hardcopy Comments

Online Comments

Appendix B

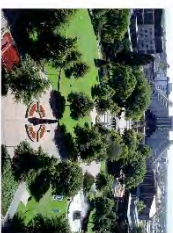
6.2 Appendix B - Survey



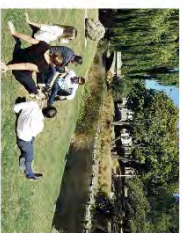
Copyright of historical public artwork by Edward J. Anderson. Victoria Square Public Artwork. Courtesy of Victoria Square Authority. Photo by Melbourne City Council.



Victoria Square 3805 - image courtesy of Christchurch City Council



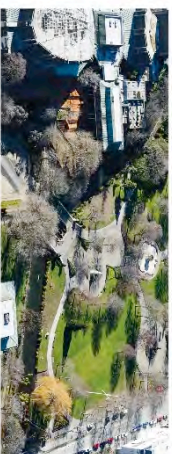
Victoria Square public artwork



A place for the people



Avu Whakairo - image courtesy of Christchurch City Council



Aerial image of Victoria Square (CDD)

Victoria Square - community participation process
 Freepost CERA
 Canterbury Earthquake Recovery Authority
 Private Bag 4999
 Christchurch 8140

Freeport Authority CERA
 Canterbury Earthquake
 Recovery Authority
CERA
 Te Kaitiaki Takekōwhiri

**AVON RIVER
 PRECINCT
 TE PAPA
 ŌTĀKARO**



**THE FUTURE OF
 VICTORIA SQUARE:
 A PLACE FOR THE PEOPLE
 KIA ATAWHAI KI TE TANGATA**

**Share your thoughts on the future
 of Victoria Square.**

Tell us what you like about the square, what you want preserved and what should be improved to enhance how people can use the space now and in the future.



Appendix B



THE COMMUNITY PARTICIPATION PROCESS

Victoria Square is part of Te Papa Ōhāroa/Avon River Precinct. The Canterbury Earthquake Recovery Authority is working together with Christchurch City Council and Ngāi Tahu on the Victoria Square community participation process.

No changes will be made to Victoria Square until this community participation process is undertaken. The extent to which changes are made will depend on the feedback received from the community.

The Associate Minister for Canterbury Earthquake Recovery will seek the endorsement of Christchurch City Council and Ngāi Tahu before making the final decision on Victoria Square.

The process

We are here



Considerations for the future of Victoria Square include:

- repairing heritage features including the Bowker Fountain
- improving safety with additional lighting
- removing of diseased and dangerous trees
- improving access and connection to the river
- connecting it with the Avon River, Convention Centre and Performing Arts Precincts, Town Hall and Victoria Street
- acknowledging the importance of Ngāi Tahu and European history and culture on this site to achieve a balanced approach to our joint heritage.

VICTORIA SQUARE - THEN AND NOW

Victoria Square is a key civic space with a rich history. Before the Canterbury earthquakes, it was a much-loved space for people to walk, relax, have their lunch and meet up with friends. It also hosted events such as the Chinese Lantern and World Bakers Festivals.

The square has considerable cultural and historical significance. Rich in natural resources, it was an important food gathering site for Ngāi Tahu in the late 1800s. It was considered the economic centre of Christchurch where Ngāi Tahu traded with European settlers. Since then it has been the site of market days, fairs and trade. Ngāi Tahu, particularly Ngāi Tahuwhiri, maintains strong cultural connections to the square.

After the February 2011 earthquake Victoria Square was closed to public access. Gradually parts of it were opened up again, with full access returning in June 2013. Most recently, the square was the site of the ICC Cricket World Cup 2015 Fanzone.



Victoria Square, Christchurch, with a view of Queen Victoria Mall. September, 1880-1897. Collection of the National Library of New Zealand. Digitized by Andrew Hurrell. <http://www.nzli.govt.nz>

THE FUTURE OF VICTORIA SQUARE: A PLACE FOR THE PEOPLE/KIA ATAWHAI KI TE TANGATA

TELL US YOUR STORY

What does Victoria Square mean to you and to your whānau?

WHAT'S IMPORTANT TO YOU?

Please rate your preferred uses for Victoria Square. Rate as many or as few as you like:

- | | |
|---|---|
| 1 - must have | 3 - somewhat important |
| <input type="checkbox"/> 1 - very important | <input type="checkbox"/> 4 - not important |
| <input type="checkbox"/> Civic events | <input type="checkbox"/> Relaxation |
| <input type="checkbox"/> Community events and festivals | <input type="checkbox"/> Meeting friends and whānau |
| <input type="checkbox"/> Markets | <input type="checkbox"/> Fitness and recreation |
| <input type="checkbox"/> Performances | <input type="checkbox"/> Eating |
| <input type="checkbox"/> Temporary art displays | <input type="checkbox"/> Pedestrian access to and from the city |
| <input type="checkbox"/> Other _____ | <input type="checkbox"/> Acknowledging the past |
| <input type="checkbox"/> Other _____ | <input type="checkbox"/> Enjoying the environment |
| <input type="checkbox"/> Other _____ | <input type="checkbox"/> Other _____ |

Please tell us why you have chosen the above uses and why they are important to you.

EXISTING FEATURES AND USES

We are committed to keeping the Queen Victoria statue, Captain Cook statue, Pou Whakairo, Bowker Fountain, the horse ramp, the Floral Clock, and the remembrance plaques.

EXISTING FEATURES AND USES

Are there any other features of Victoria Square that you would like retained?

NEW FEATURES

Are there any new features or uses you would like included in Victoria Square?

OTHER COMMENTS?

Do you have any other comments to make about the future of Victoria Square?

Fold this form with the address facing out, tape edge and post. Please return by 24 April 2015

For more information visit: cdd.govt.nz/victoria-square | You can also fill out this form online: yourvoiceccc.govt.nz/victoria-square | Please return by 24 April 2015

Level 17, 344 Queen Street Brisbane Q 4000

ACN 159 342 373 | ABN 46 159 342 373

www.articulous.com.au

